

# Your part in the RSPO supply chain: A guide for distributors and wholesalers

## Who are distributors and wholesalers?

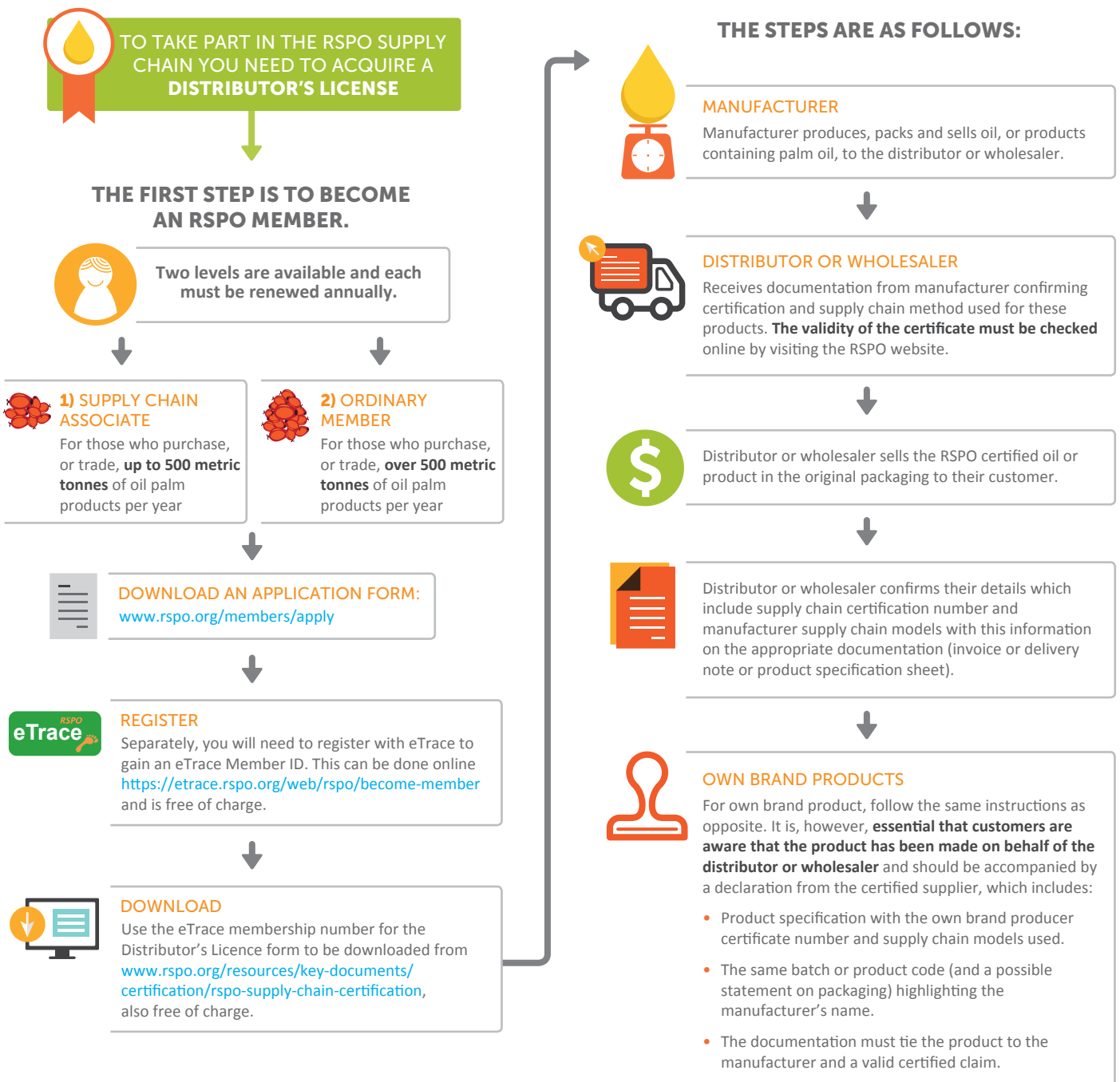
For the purposes of RSPO supply chain certification, distributors and wholesalers take legal ownership, store and sell products to their customer bases, but do not unpack, repack or relabel those products at any stage.

They have a vital role to play in maintaining the integrity of the RSPO certified supply chain. They link participants in the supply chain together and ensure that RSPO certified products are kept separate and are never mixed with mainstream, non-certified material.

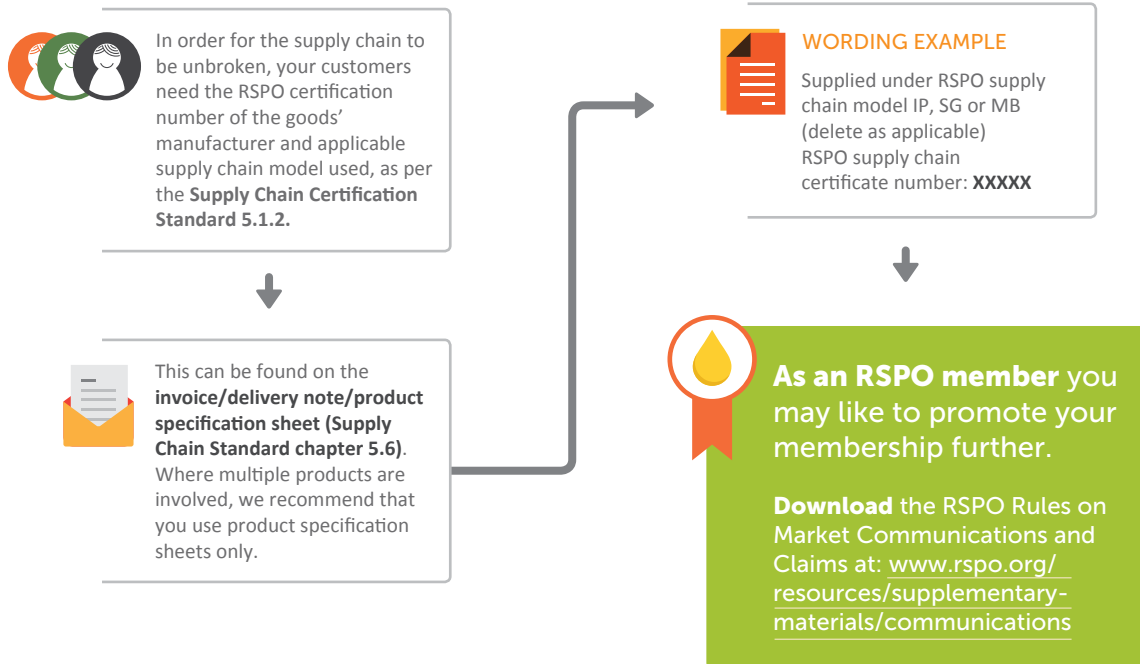
Their customers include food and non-food manufacturers, smaller high street retailers and foodservice outlets.

## Getting Started

### THE STEPS ARE AS FOLLOWS:



## Communication with your customers



e-Trace RSPO

[www.etrace.rspo.org](http://www.etrace.rspo.org)

RSPO Rules on Communication and Claims:  
[www.rspo.org/resources/supplementary-materials/communications](http://www.rspo.org/resources/supplementary-materials/communications)

Have a question? 

<https://askrspo.custhelp.com/app/answers/list>

## CONTACT US

For membership related questions:  
**[membership@rspo.org](mailto:membership@rspo.org)**

For supply chain certification related questions:  
**[certification@rspo.org](mailto:certification@rspo.org)**

For trademark related questions:  
**[trademark@rspo.org](mailto:trademark@rspo.org)**

**[www.rspo.org](http://www.rspo.org)**